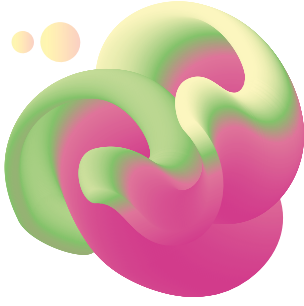


*ebalta*

# THE ECO-FRIENDLY POLYURETHANE CASTING RESIN

FOR SUSTAINABLE CLIMBING HOLDS!

MEMBER OF **allHOLDS**



## The casting resin made from ECO-friendly polyurethane by ebalta



**As a leading manufacturer of casting resins and modeling boards, together with allHOLDS, a network of independent climbing hold manufacturers, we have developed the environmentally friendly PU casting resin GM 2310 made from approximately 40 percent renewable raw materials. Whether rapeseed oil, sunflower oil or sugar: polyols can also be produced on the basis of renewable raw materials.**

### **Sustainability under control!**

Both, our company and our PU casting resin as a product, are certified climate-neutral. The remaining emissions are compensated for by investments in sensible climate protection projects. This means, the hold is CO<sub>2</sub> neutral until its end-of-life.

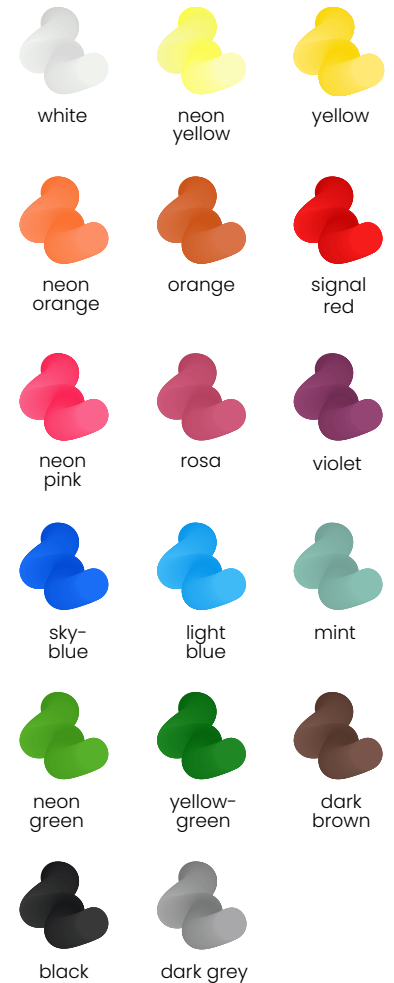
### **In addition to its environmental friendliness, our material has all the necessary properties for an excellent climbing hold:**

- ✓ Due to its high abrasion resistance the climbing hold can remain in use for a long time.
- ✓ Because of its simple manufacturing process and its better workability than polyester, there are no limits to the variety of possible climbing hold design ideas.
- ✓ With polyurethane thinner wall thicknesses can be produced than with polyester. Material consumption is therefore reduced by 80% and the hold is much lighter. This is noticeable in handling, packaging and transportation.
- ✓ The new PU material allows cycle times of 10 minutes. This makes production more efficient.
- ✓ Our big range of ebalta pastes in fancy colours add to an appealing climbing experience.



PRODUCT L = HAND CASTING S = MACHINE CASTING	Mixture GM 2310 L + S Comp. A + B	Resin GM 2310 Comp. A	Hardener GM 2310 Comp. B
Colour	opaque	opaque	yellow transparent
Applications	climbing holds, master, displacers		
Properties	<ul style="list-style-type: none"> <li>• suitable for production of climbing moulds according EN 12572-3:2017</li> <li>• abrasion resistant</li> <li>• <b>free of plasticiser</b></li> <li>• contains <b>appr. 40% raw materials from renewable sources</b></li> <li>• good impact strength</li> <li>• very easy to cast</li> <li>• easily pigmented</li> <li>• unfilled</li> </ul>		
Mixing ration (p. b. w.)		100	75
Viscosity at 25°C (mPas)	1000 ± 100	1800 ± 100	20 ± 5
Density at 20°C (g/cm <sup>3</sup> )	1.14 ± 0.02	1.13 ± 0.02	1.22 ± 0.02
Gel tim 200g / 20°C (min.)	L	S	-
	8 - 10	2 - 3	
Curing time at RT (min.)	L	S	-
	appr. 60	10 - 15	
<b>PHYSICAL DATA</b>			
Flexural strength (MPa)	90 ± 5		
Flexural elongation at break (%)	no break		
Flexural modulus (MPa)	2200 ± 100		
Impact resistance (Charpy) (kJ/m <sup>3</sup> )	85 ± 10		
Heat resistance (HDT) (°C)	appr. 80		
Shore hardness (Shore D)	appr. 80		
Sales Units (kg)	Komp. A: 5   25   200   1000 Komp. B: 3.75   18.75   200   1200		

**ebalta pastes are available in the following colours:**



## Our all-inclusive package

Casting resin • colour pastes • silicones • know-how

Component A can be coloured by adding our ebalta colour pastes. For the production of moulds for climbing holds we recommend our ebalta silicones. In addition to that, we have extensive know-how and are happy to provide support in the areas of mould construction, processing, machine casting and production optimisation.

**more infos:**



**shaping  
sustainable  
solutions.**



**shaping  
sustainable  
solutions.**

**Contact:  
[www.ebalta.com](http://www.ebalta.com)  
[info@ebalta.com](mailto:info@ebalta.com)  
Tel.: +49 98 61 / 7007 -0**

